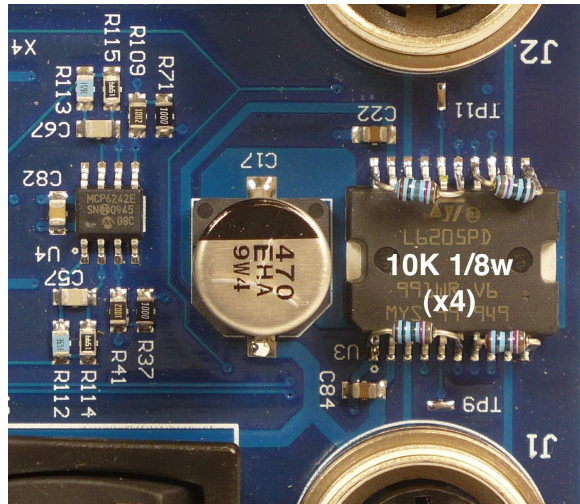
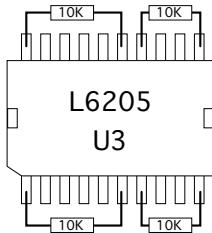


## Gemini 2 Circuit Revision - October 17, 2011

The following describes the modification to the Gemini 2 printed circuit board to eliminate the possibility of a motor "jump" upon power start-up. The previous mod with a 100 $\mu$ F electrolytic cap from TP11 to ground should be removed before proceeding.

### COMPONENT SIDE

Solder four 10K 1/8 watt resistors on L6205 (U3). Across pins 1 and 6; 7 and 10; 11 and 14; 15 and 20. Warning! - Work carefully and avoid solder bridges.



### SOLDER SIDE

Replace R107 and R108 with 100K resistors (size 0805 SMT).

Replace C26 and C27 with .0056 $\mu$ F capacitors. (0805)

(Note: You may solder the .0056 caps alongside the original .001 $\mu$ F values.)

